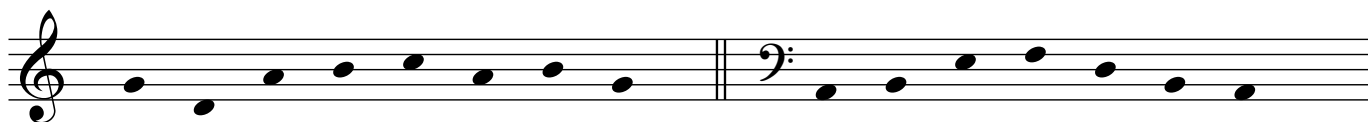


Zulassungsprüfung BA Computermusik - Gehörtest (en) - MODEL

NAME:

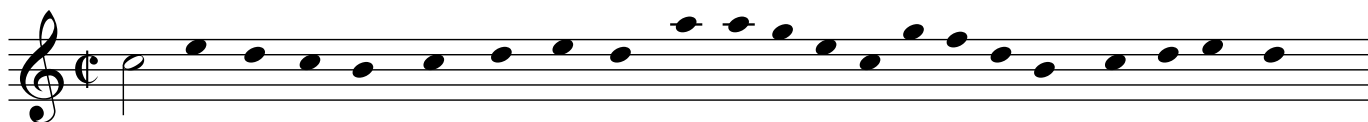
- (1) Notate the following melodies without durations, starting from the given note.



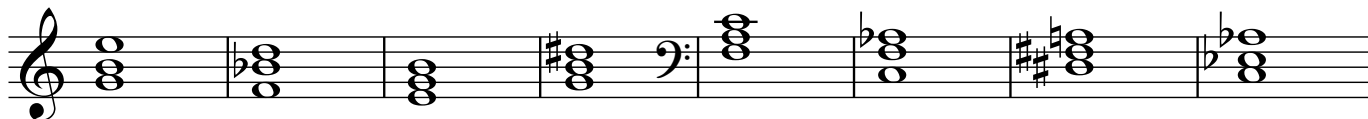
- (2) Notate the following scale **upwards** starting from the given note. Notate the following scale **downwards** starting from the given note.



- (3) Complement the rhythmic notation and the missing bar lines.



- (4) Determine the following triads and inversions:
Hereby specify the **mode** and the **type of inversion**,
use the abbreviations
R: root position, 6: sixth chord (first inversion), $\frac{6}{4}$: six-four chord (second inversion).
E.g.: Minor (6), Major (R), diminished (R)



- (5) Complement the missing accidental of the played triads and inversions (exactly one is missing in each example).



- (6) The following three music examples will be played twice each. Determine the time signature (tuple/quadruple vs. triple), whether it starts with a pickup and the mode. Mark the correct answer with a cross or by encircling.

	Time signature		Pickup ?		Mode	
Ex. 1	duple / quadruple	triple	yes	no	major	minor
Ex. 2	duple / quadruple	triple	yes	no	major	minor
Ex. 3	duple / quadruple	triple	yes	no	major	minor

- (7) Describe characteristic aspects of the following piece of music: instrumentation, harmony, temporal configuration.
How do you classify it with regard to style and era ?